



CHIEF COMMERCIAL ENCLOSED BELT (CCEB)



- » *Continuous Duty Applications*
- » *Three Independent Idlers with External Bearings*

Trusted. Tested. True.®

agri.chiefind.com

EFFICIENT

Full capacity - delivered! Our flagship enclosed belt conveyor is ideal for handling large capacities and continuous duty applications that run 24 hours a day, seven days a week.

DURABLE

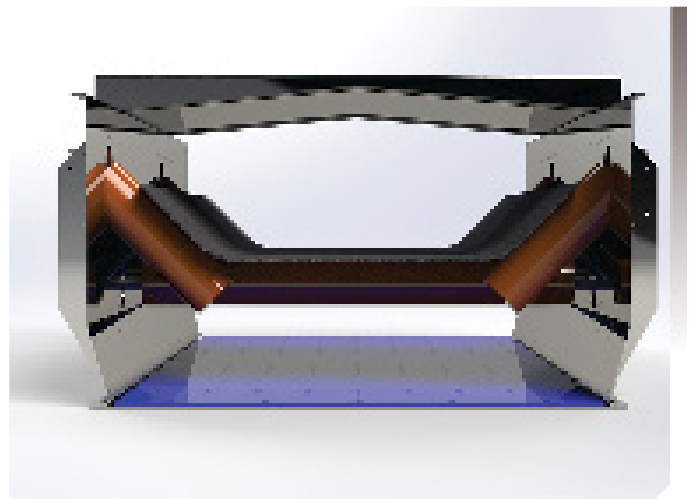
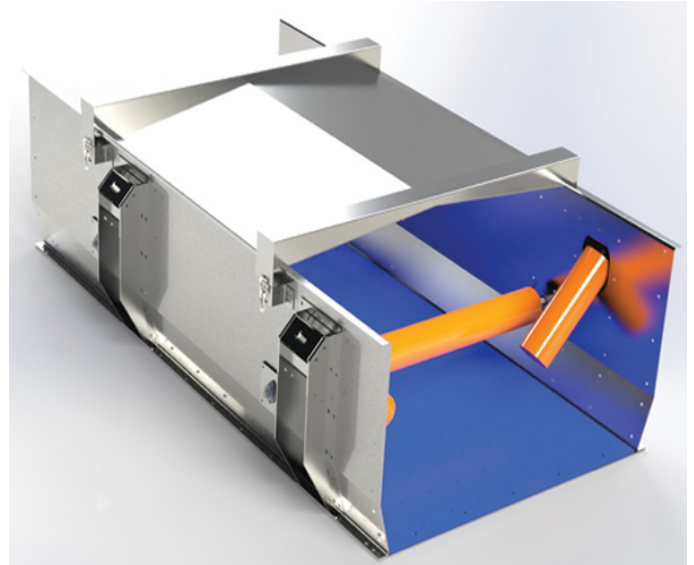
Components are manufactured to precise standards from heavy gauge materials to provide easy installation and strength.

DESIGN

By utilizing 3 independent idlers, we are able to maximize the cross-sectional area for increased capacity and operate at a low speed. Each independent idler is easily removed from the outside of the conveyor frame for easy maintenance and replacement. Additionally, there are no brackets or bearings exposed to the internal atmosphere of the conveyor housing.

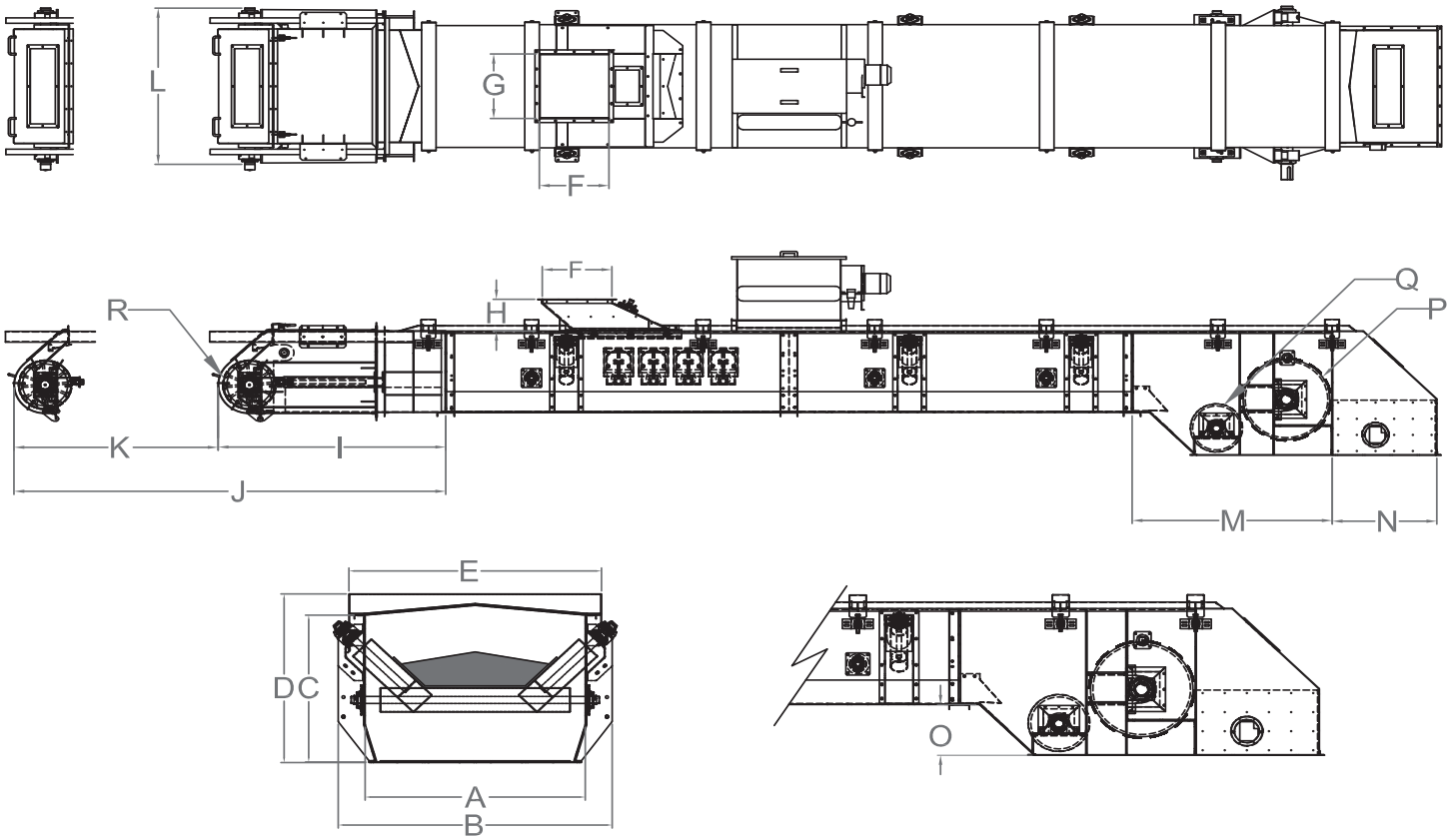
GENTLE

Our low speed/high capacity design minimizes breakage at impact points.



CHIEF COMMERCIAL ENCLOSED BELT (CCEB) SPECIFICATIONS

CAPACITY	BELT WIDTH	BELT SPEED	PULLEY DIAMETER	HEAD PULLEY
BPH	Inches	FPM	Inches	
(MTPH)	(mm)	(m/s)	(mm)	RPM
3933	18	400	14	109.2
(100)	(457.2)	(2.03)	(355.6)	
9349	24	450	18	95.5
(250)	(609.6)	(2.29)	(457.2)	
15293	30	450	18	95.5
(400)	(762)	(2.29)	(457.2)	
22646	36	450	24	71.7
(600)	(914.4)	(2.29)	(609.6)	
32755	42	500	24	79.6
(900)	(1066.8)	(2.54)	(609.6)	
60448	48	500	30	63.7
(1500)	(1219.2)	(2.54)	(762)	
73200	54	550	30	70.1
(1800)	(1371.6)	(2.79)	(762)	
74434	60	550	30	67.8
(2000)	(1524)	(2.79)	(762)	



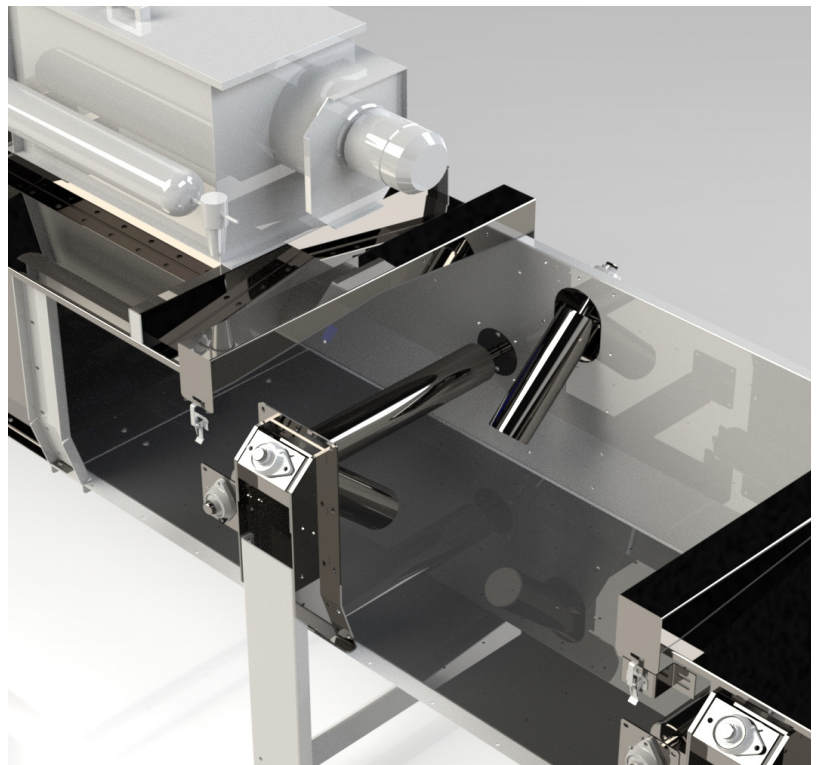
DIMENSIONS		CCEB MODEL							
		18 (mm)	24 (mm)	30 (mm)	36 (mm)	42 (mm)	48 (mm)	54 (mm)	60 (mm)
A	Mid Section Width(Inside)	23 5/8 (600)	29 5/8 (752)	35 5/8 (905)	41 5/8 (1057)	47 5/8 (1210)	53 5/8 (1362)	59 5/8 (1514)	62 5/8 (1591)
B	Mid Section Width(Outside)	26 7/8 (683)	32 7/8 (835)	38 7/8 (987)	44 7/8 (1140)	50 7/8 (1292)	56 7/8 (1445)	62 7/8 (1597)	68 7/8 (1749)
C	Mid Section Height (Inside)	24 3/8 (619)	24 3/8 (619)	26 3/8 (670)	27 3/8 (695)	29 3/16 (741)	30 5/16 (770)	31 9/16 (802)	33 3/8 (848)
D	Mid Section Overall Height	28 7/8 (733)	28 7/8 (733)	30 9/16 (776)	31 9/16 (802)	33 11/16 (856)	34 13/16 (884)	36 (916)	37 7/8 (962)
E	Top Splice Width	29 3/4 (756)	35 3/4 (908)	41 3/4 (1060)	47 3/4 (1213)	53 3/4 (1365)	59 3/4 (1518)	65 3/4 (1670)	71 3/4 (1822)
F	Inlet Opening Length	14 (356)	20 (508)	24 (610)	24 (610)	24 (610)	30 (762)	30 (762)	48 (1219)
G	Inlet Opening Width	14 (356)	20 (508)	24 (610)	24 (610)	24 (610)	30 (762)	30 (762)	48 (1219)
H	Inlet Height from top Cover	10 (254)	10 (254)	12 (305)	12 (305)	12 (305)	12 (305)	12 (305)	12 (305)
I	Tail Section (Retracted)	46 7/8+TAKE UP LENGTH (1190+TAKE UP LENGTH)							
J	Tail Section (Extended)	46 7/8+(2X TAKE UP LENGTH) (1190+(2X TAKE UP LENGTH))							
K	Take up	UP TO 48 (UP TO 1219)							
L	Tail Width (-2x bearing width)	31 1/4 (794)	37 1/4 (946)	43 1/4 (1099)	49 1/4 (1251)	55 1/4 (1403)	61 1/4 (1556)	67 1/4 (1708)	73 1/4 (1861)
M	Head Length	39 3/8 (1000)	39 3/8 (1000)	52 3/4 (1340)	68 7/8 (1749)	68 7/8 (1749)	68 7/8 (1749)	68 7/8 (1749)	78 3/4 (2000)
N	Discharge Length	18 (457)	24 (610)	24 (610)	36 (914)	36 (914)	36 (914)	36 (914)	48 (1219)
O	Discharge Bottom	10 5/8 (270)	10 5/8 (270)	10 5/8 (270)	16 (406)	16 (406)	16 (406)	16 (406)	16 (406)
P	Head Pulley(- Lagging)	14 (356)	14 (356)	24 (610)	30 (762)	30 (762)	30 (762)	30 (762)	48 (1219)
Q	Snub Pulley	-	8 (203)	12 (305)	18 (457)	18 (457)	18 (457)	18 (457)	18 (457)
R	Tail Pulley	14 (356)	14 (356)	14 (356)	18 (457)	18 (457)	18 (457)	18 (457)	18 (457)

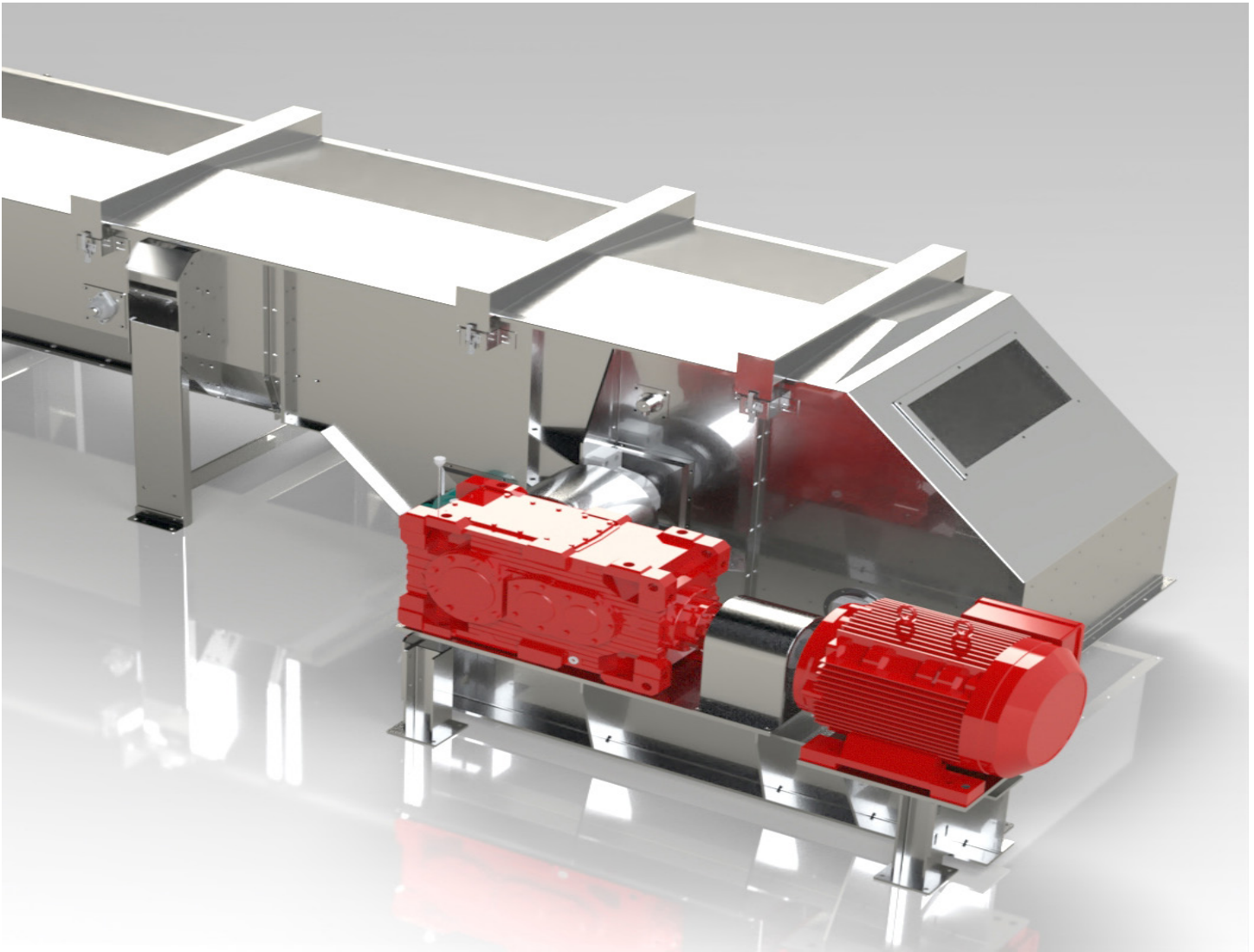
Dimensions are in Inches, (mm).



MID SECTION

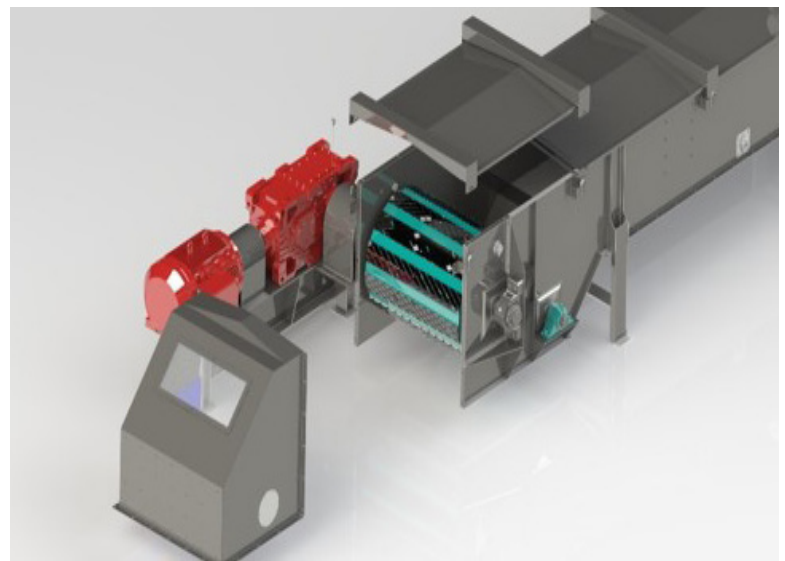
- (3) Independent 5" Diameter Idlers
- 100% External Bearings
- All Idlers are Easily Removed Through the Side of the Conveyor Frame
- Galvanized Bottom Covers with 1/2" Thick Low Friction Lining for Self-Cleaning
- 10ga Galvanized Construction Standard (Stainless and Powdercoat HR Available Options)
- Heavy Duty Industrial Belt
 - Static Conductive
 - Oil Resistant
 - Fire Resistant
 - Mechanical Splice and Protectors

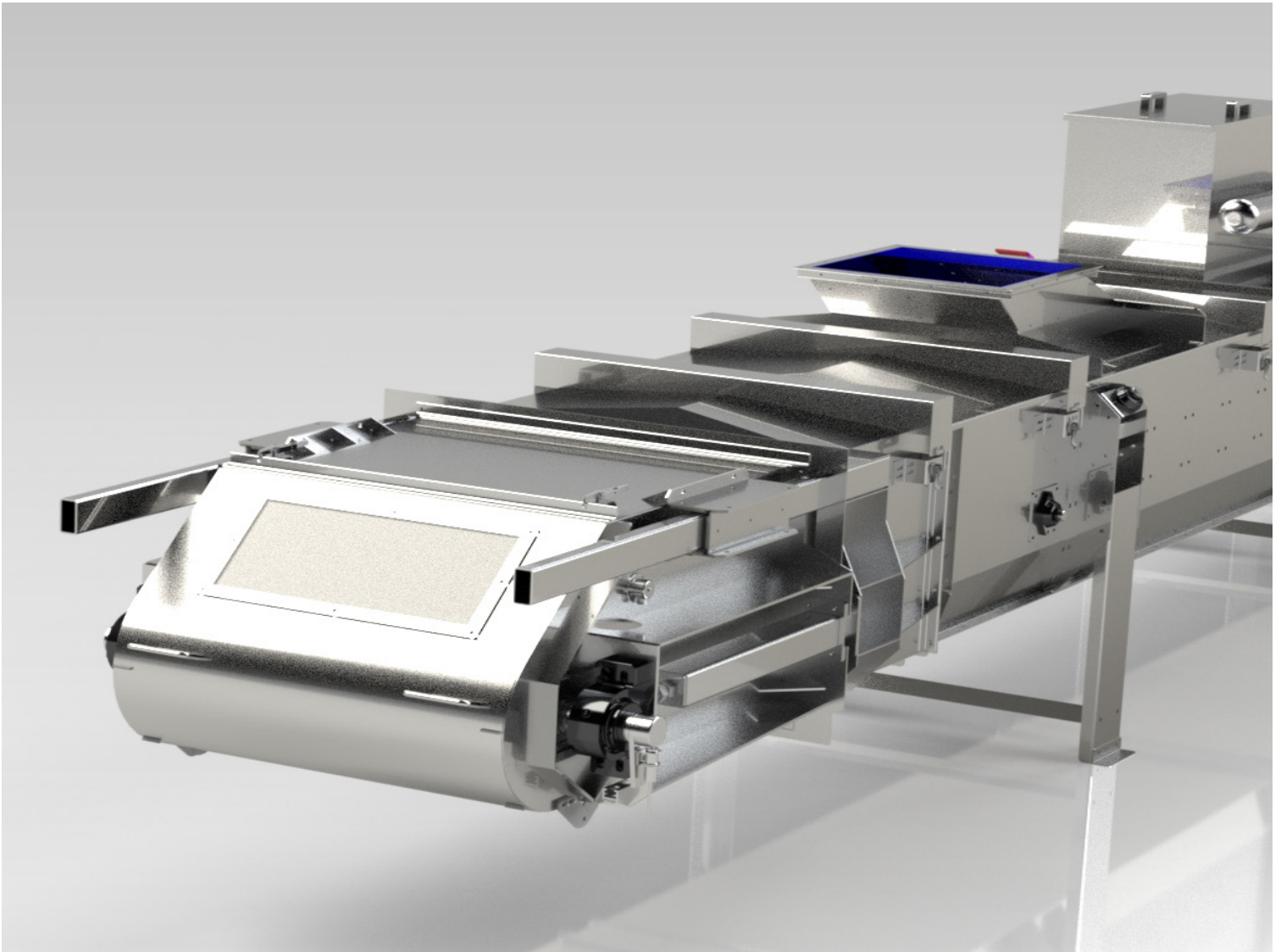




HEAD SECTION

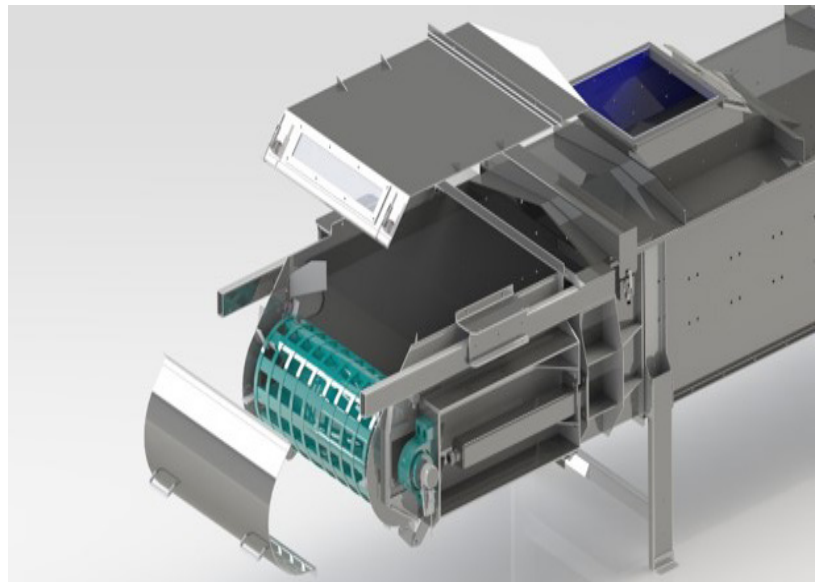
- Head Section is Split for Easy Pulley, Shaft and Bearing Removal or for the Addition of 2-Way Valve
- Discharge area is Lined with 1/4" Expanded Metal Urethane
- Dodge MTA Standard with SWE Eurodrive as an alternative
- Plexiglass Windows for Visual Inspections
- Heavy Duty Crown Faced, Craft Lagged Head Pulley

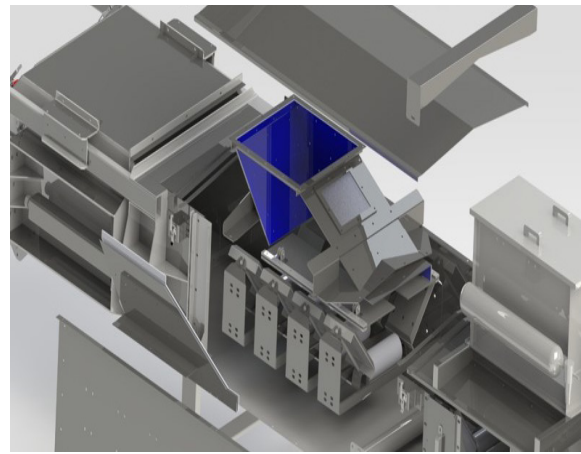
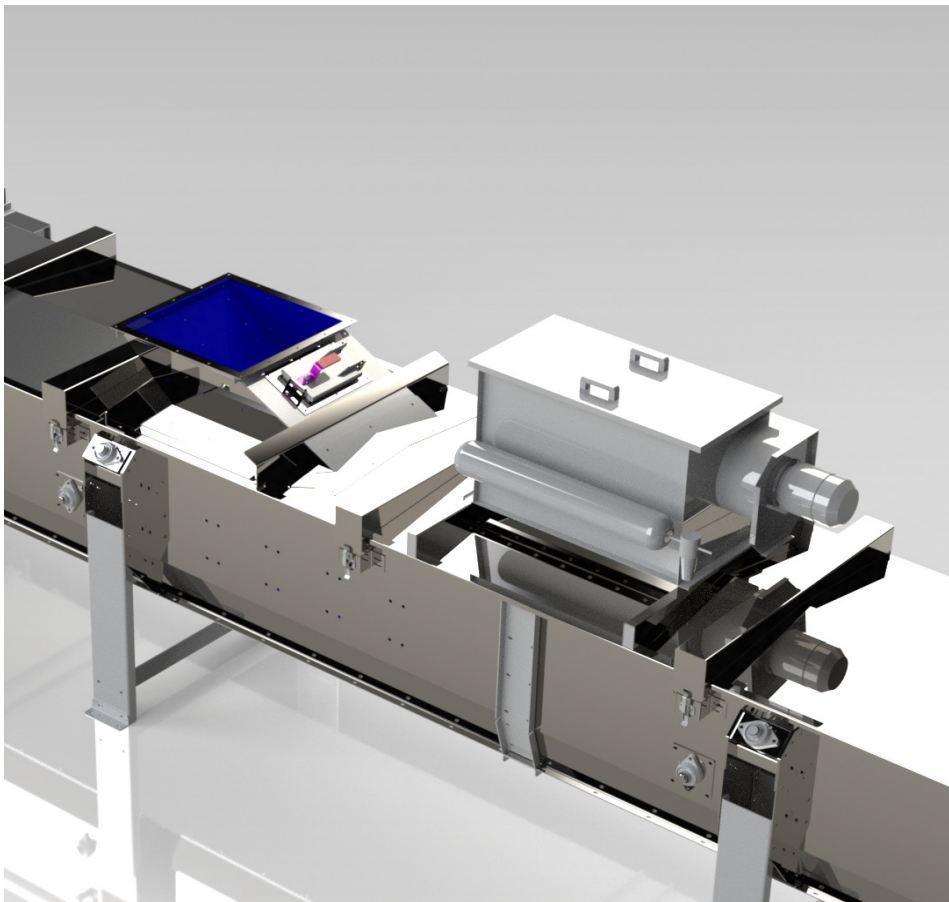




TAIL SECTION

- Heavy Duty, Protected Acme Threaded Take-Up as Standard
- Gravity Take Ups are Available as an Option
- Plexiglass Windows for Visual Inspections
- Heavy Duty Crown Faced, Spiral Winged, Reloading Tail Pulley
- Tail Section is Split for Easy Pulley, Shaft and Bearing Removal

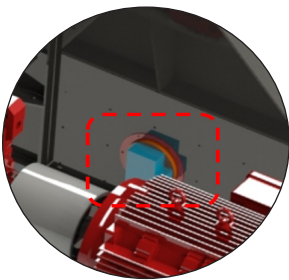




INLET SECTION

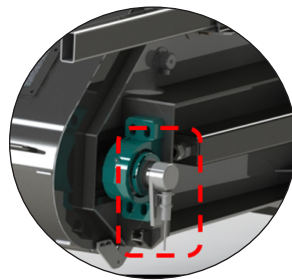
- Lined Inlets, Impact Cradle and Skirting are Standard for Each Loading Area
- Point Dust Filters at Inlet and Discharge are Available as Recommended Options

AVAILABLE OPTIONS



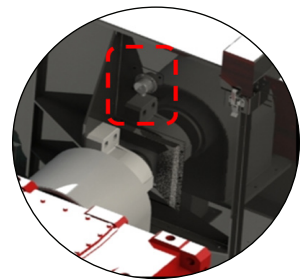
BLOCKED CHUTE SWITCH

Designed to produce a signal if the flow of material is interrupted.



ZERO SPEED SWITCH

Will sense under speed, over speed or zero speed conditions.

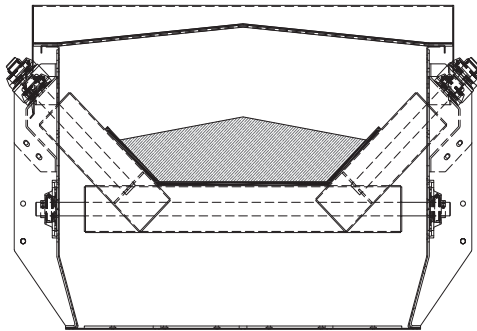


BELT ALIGNMENT SWITCH

Belt alignment switches are typically used in pairs with one switch on each side of the conveyor belt mounted near the first and/or last pulley of a conveyor.

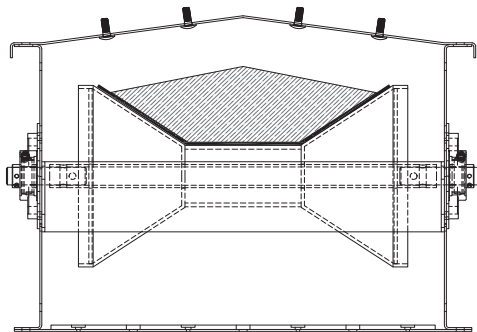
PRODUCT LINE

Belt Conveyors are a great choice for gentle handling of any commodity. Belt Conveyors are available in any length or capacity and require lower kilowatt per meter input than comparable chain conveyors.



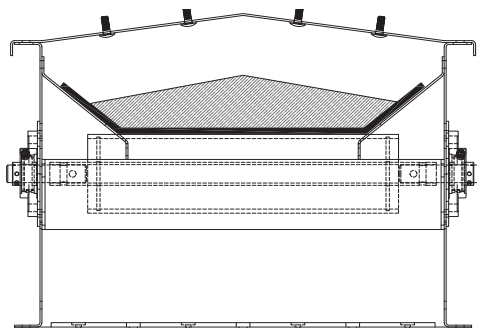
CCEB (CHIEF COMMERCIAL ENCLOSED BELT)

By utilizing 3 independent idlers, we are able to maximize the cross-sectional area for increased capacity and operate at a low speed. Each independent idler is easily removed from the outside of the conveyor frame for easy maintenance and replacement. Additionally, there are no brackets or bearings exposed to the internal atmosphere of the conveyor housing.



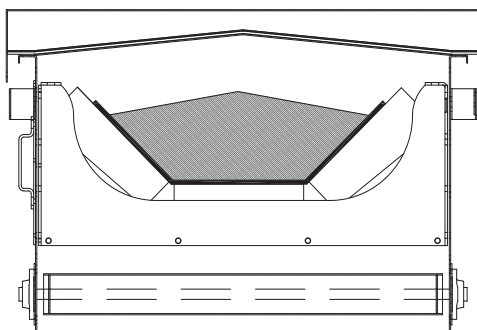
CSEB (CHIEF SPOOL ENCLOSED BELT)

The spool-shaped idler provides a troughed support for the conveyor belt. The spool idler uses two externally isolated bearings, providing easy access through the side of the conveyor. Routine maintenance can be conducted with no damage or need to cut the belt.



CAEB (CHIEF AGRICULTURAL ENCLOSED BELT)

When space is limited, the model CAEB is our lowest profile belt conveyor. This conveyor utilizes flat idlers for belt load support and UHMW lined side slides for belt edge support. The flat carry idlers have externally mounted bearings and the idler can be removed from the side of the conveyor frame.



CEEB (CHIEF EXTENDED LENGTH ENCLOSED BELT)

By utilizing a combination of standard CEMA idlers and self-aligning idlers, this conveyor can easily transport any commodity up to 1km in distance. Each idler frame is easily removed from the outside of the conveyor frame for easy maintenance and replacement.