



CHIEF SPOOL ENCLOSED BELT (CSEB)



- » *Spool Shaped Idler with External Bearings*
- » *Ideal for Handling Medium Capacities*

Trusted. Tested. True.®

agri.chiefind.com

EFFICIENT

Our Chief Spool Enclosed Belt conveyor is ideal for handling medium capacities and lengths.

DURABLE

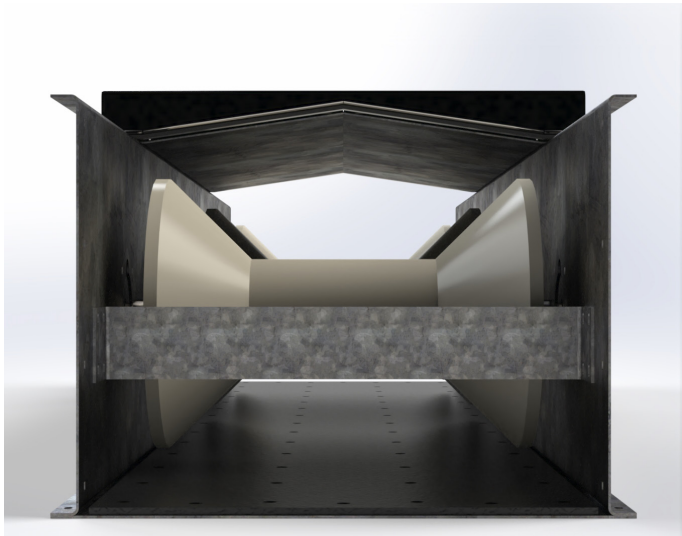
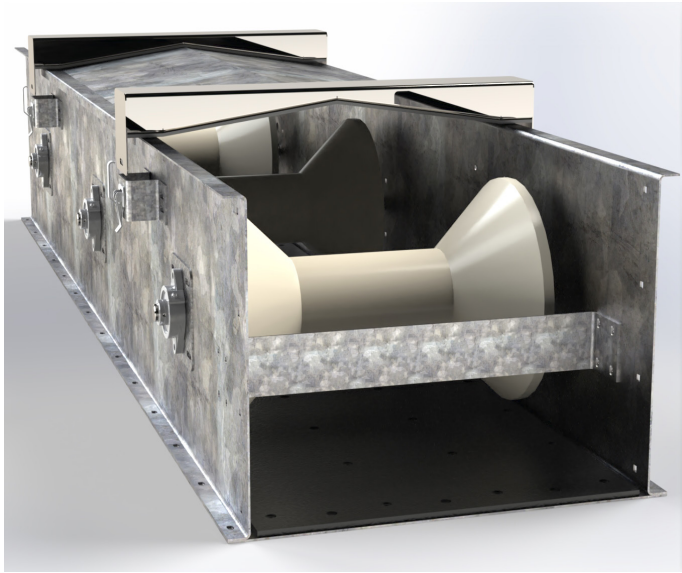
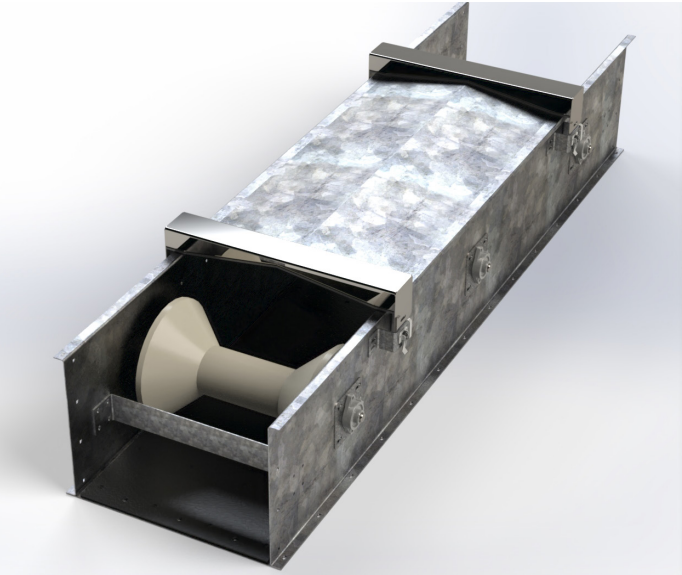
Components are manufactured to precise standards from heavy gauge materials providing easy installation and strength.

DESIGN

The spool-shaped idler provides a troughed support for the conveyor belt. The spool idler uses two externally isolated bearings.

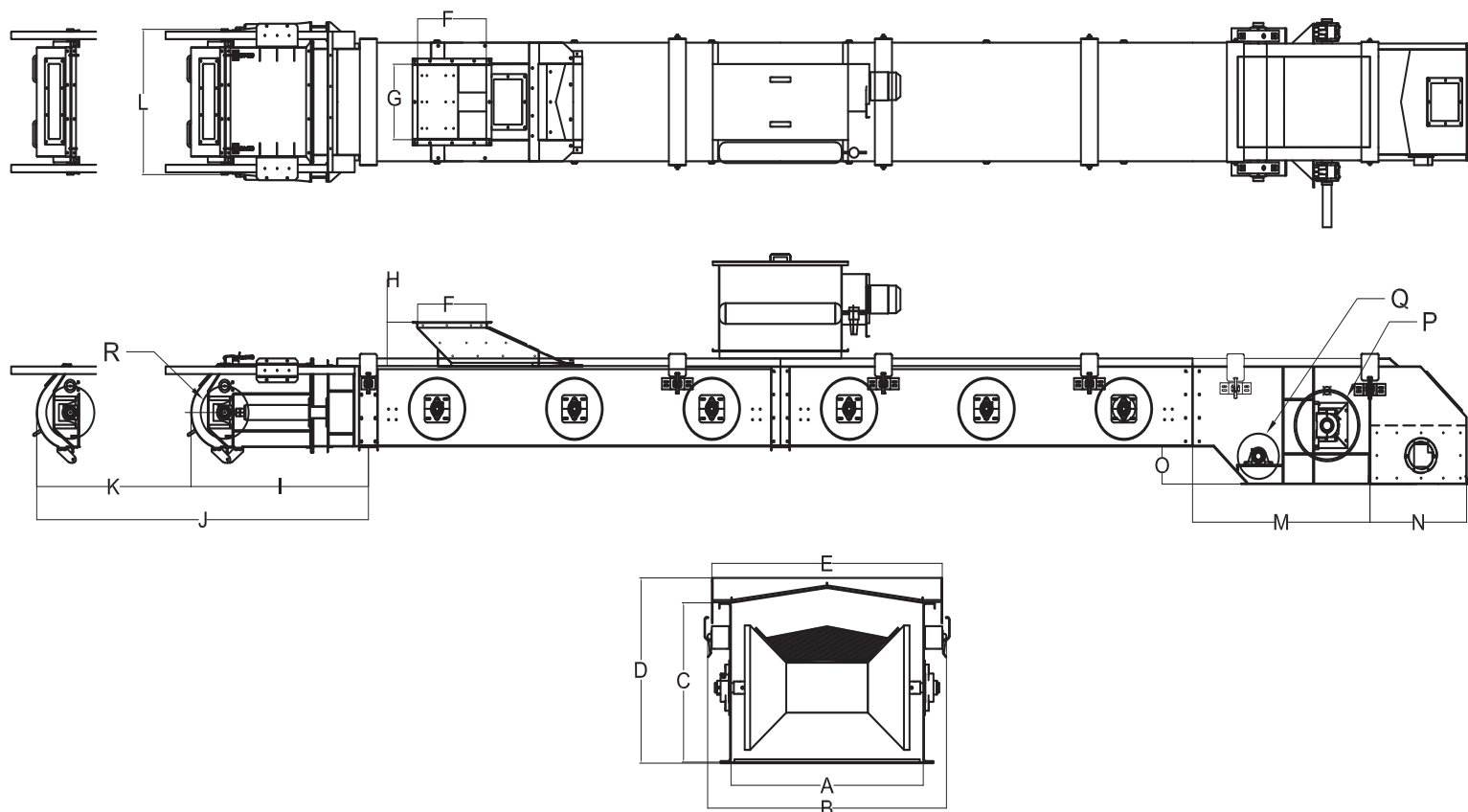
GENTLE

Our low speed/high capacity design minimizes breakage at impact points.



CHIEF SPOOL ENCLOSED BELT (CSEB) SPECIFICATIONS

CAPACITY	BELT WIDTH	BELT SPEED	PULLEY DIAMETER	HEAD PULLEY
BPH	Inches	FPM	Inches	RPM
(MTPH)	(mm)	(m/s)	(mm)	
4729	18	450	14	122.8
(125)	(457.2)	(2.29)	(355.6)	
7616	24	450	18	95.5
(200)	(609.6)	(2.29)	(457.2)	
11779	30	450	18	71.7
(300)	(762)	(2.29)	(457.2)	
19176	36	450	24	71.7
(500)	(914.4)	(2.29)	(609.6)	
24880	42	450	24	57.3
(600)	(1066.8)	(2.29)	(609.6)	
31128	48	450	30	57.3
(800)	(1219.2)	(2.29)	(762)	
37744	54	450	30	57.3
(1000)	(1371.6)	(2.29)	(762)	
40635	60	500	36	53.1
(1200)	(1524)	(2.54)	(914.4)	



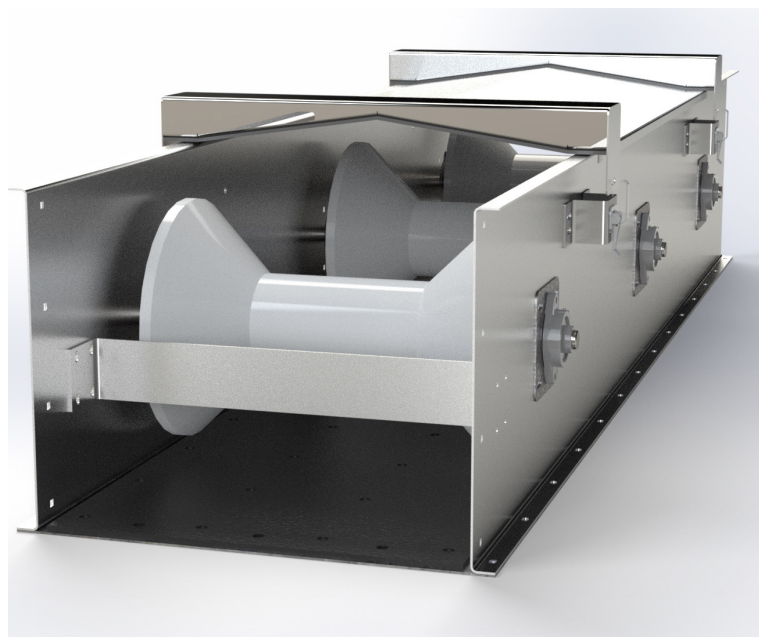
DIMENSIONS		CSEB MODEL							
		18 (mm)	24 (mm)	30 (mm)	36 (mm)	42 (mm)	48 (mm)	54 (mm)	60 (mm)
A	Mid Section Width(Inside)	22 (559)	28 (711)	34 (864)	40 (1016)	46 (1168)	52 (1321)	58 (1473)	64 (1626)
B	Mid Section Width(Outside)	25 (635)	31 (787)	37 (940)	43 (1092)	49 (1245)	55 (1397)	61 (1549)	67 (1702)
C	Mid Section Height (Inside)	21 1/8 (537)	21 1/8 (537)	24 5/8 (625)	24 5/8 (625)	24 5/8 (625)	24 5/8 (625)	25 5/8 (651)	25 5/8 (651)
D	Mid Section Overall Height	24 9/16 (624)	24 9/16 (624)	28 1/16 (713)	28 1/16 (713)	28 1/16 (713)	28 1/16 (713)	29 1/16 (738)	29 1/16 (738)
E	Top Splice Width	27 1/2 (699)	33 1/2 (851)	39 1/2 (1003)	45 1/2 (1156)	51 1/2 (1308)	57 1/2 (1461)	63 1/2 (1613)	69 1/2 (1765)
F	Inlet Opening Length	14 (356)	20 (508)	24 (610)	24 (610)	24 (610)	30 (762)	30 (762)	48 (1219)
G	Inlet Opening Width	14 (356)	20 (508)	24 (610)	24 (610)	24 (610)	30 (762)	30 (762)	48 (1219)
H	Inlet Height from top Cover	10 (254)	10 (254)	12 (305)	12 (305)	12 (305)	12 (305)	12 (305)	12 (305)
I	Tail Section (Retracted)	16 3/8 + TAKE UP LENGTH (416 + TAKE UP LENGTH)							
J	Tail Section (Extended)	16 3/8 + (2 X TAKE UP LENGTH) (416 + (2 X TAKE UP LENGTH)							
K	Take up	UP TO 48 (UP TO 1219)							
L	Tail Width	36 1/4 (921)	42 1/4 (1073)	48 1/4 (1226)	54 1/4 (1378)	60 1/4 (1530)	66 1/4 (1683)	72 1/4 (1835)	78 1/4 (1988)
M	Head Length	48 (1219)	48 (1219)	56 7/8 (1445)	56 7/8 (1445)	56 7/8 (1445)	65 3/4 (1670)	65 3/4 (1670)	74 5/8 (1895)
N	Discharge Length	18 (457)	24 (610)	24 (610)	36 (914)	36 (914)	36 (914)	36 (914)	48 (1219)
O	Discharge Bottom	10 5/8 (270)	10 5/8 (270)	10 5/8 (270)	16 (406)	16 (406)	16 (406)	16 (406)	16 (406)
P	Head Pulley(- Lagging)	14 (356)	18 (457)	24 (610)	24 (610)	24 (610)	30 (762)	30 (762)	36 (914)
Q	Snub Pulley	- (356)	8 (203)	12 (305)	12 (305)	12 (305)	18 (457)	18 (457)	18 (457)
R	Tail Pulley	14 (356)	14 (356)	14 (356)	14 (356)	14 (356)	18 (457)	18 (457)	18 (457)

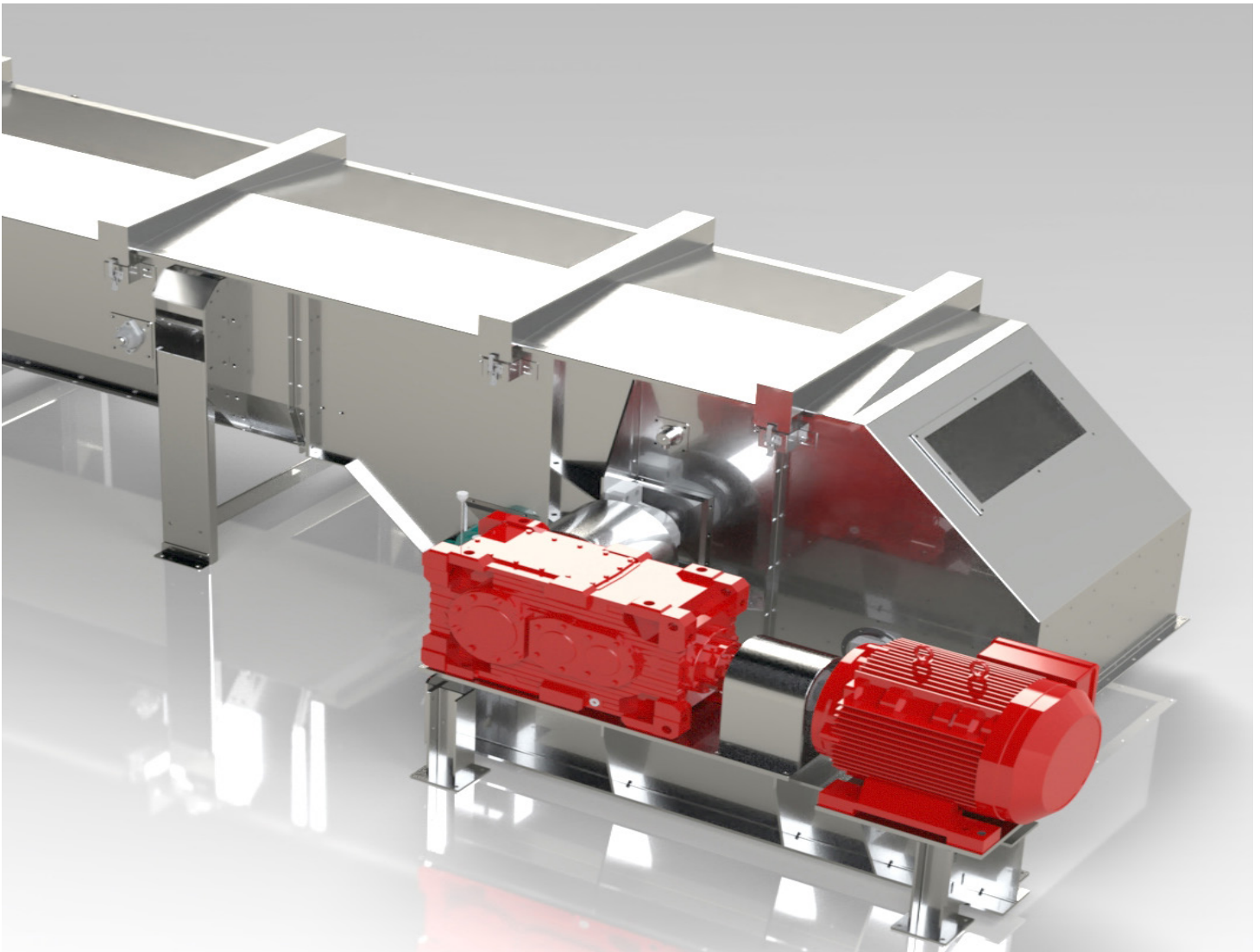
Dimensions are in Inches, (mm).



MID SECTION

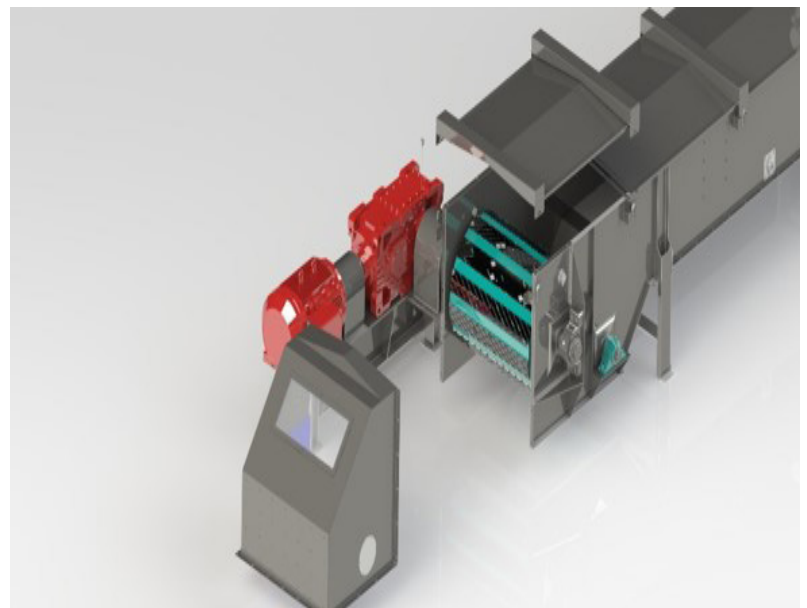
- Single Spool Idler
- 100% External Bearings
- Galvanized Bottom Covers with 3/8" Thick Low Friction Lining for Self-Cleaning
- 10ga Galvanized Construction Standard (Stainless and Powdercoat HR Available Options)
- Heavy Duty Industrial Belt
 - Static Conductive
 - Oil Resistant
 - Fire Resistant
 - Mechanical Splice and Protectors

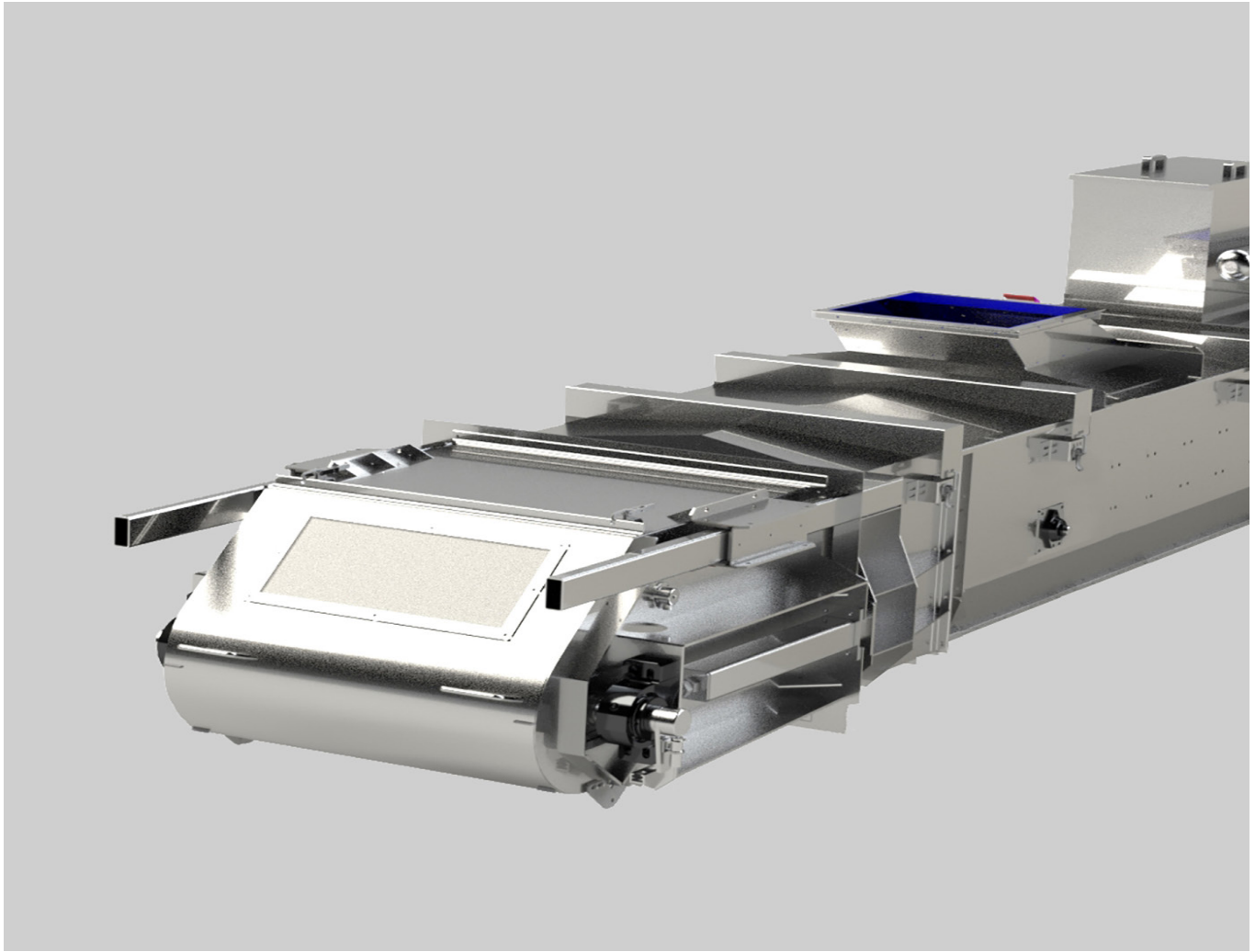




HEAD SECTION

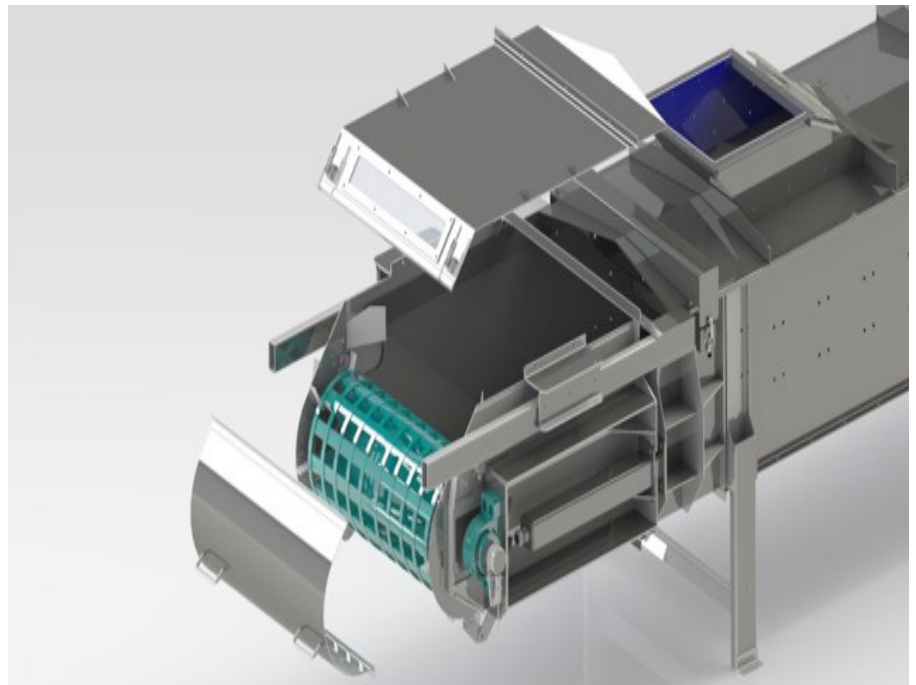
- Head Section is Split for Easy Pulley, Shaft and Bearing Removal or for the Addition of 2-Way Valve
- Discharge area is Lined with 1/4" Expanded Metal Urethane
- Dodge MTA or SEW Eurodrive are available as standards
- Plexiglass Windows for Visual Inspections
- Heavy Duty Crown Faced, Craft Lagged Head Pulley

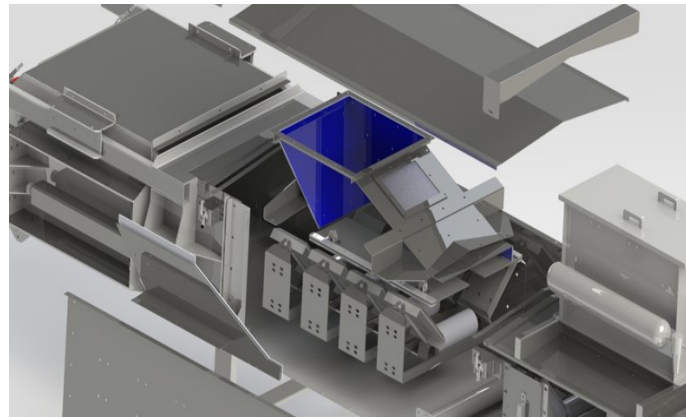
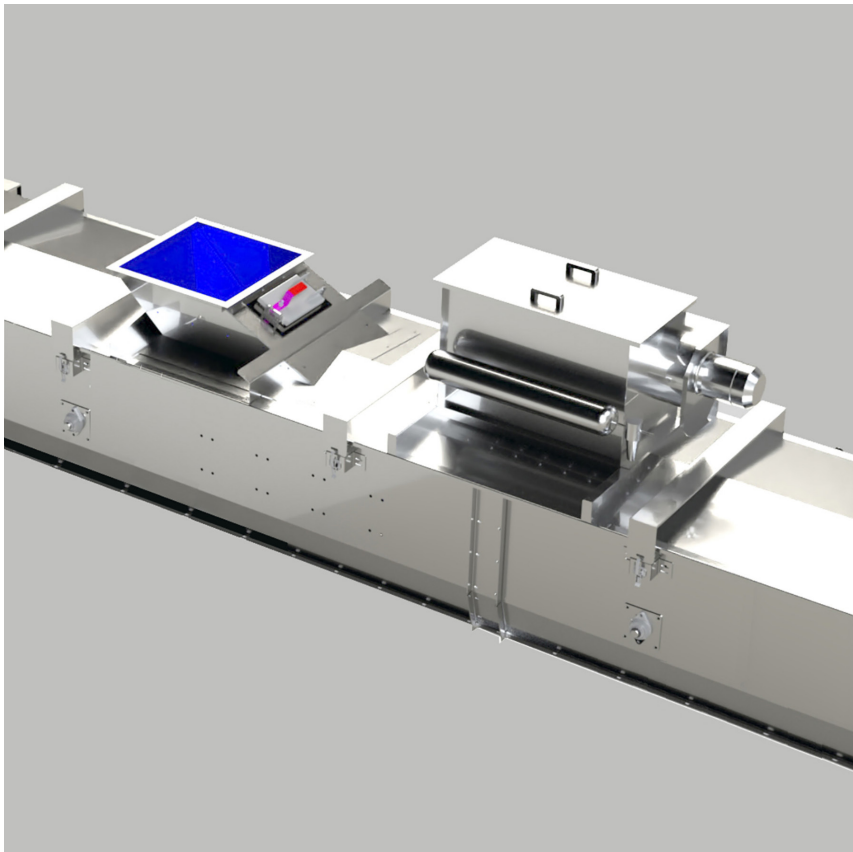




TAIL SECTION

- Heavy Duty, Protected Acme Threaded Take-Up as Standard
- Gravity Take Ups are Available as an Option
- Plexiglass Windows for Visual Inspections
- Heavy Duty Crown Faced, Spiral Winged, Reloading Tail Pulley
- Tail Section is Split for Easy Pulley, Shaft and Bearing Removal

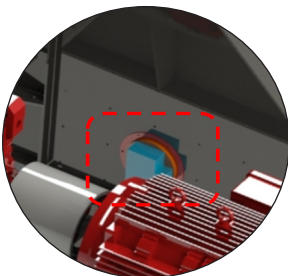




INLET SECTION

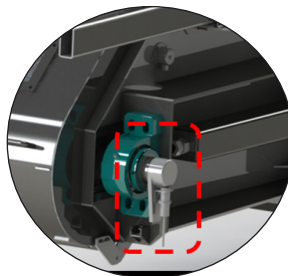
- Lined Inlets, Impact Cradle and Skirting are Standard for Each Loading Area
- Point Dust Filters at Inlet and Discharge are Available as Recommended Options

AVAILABLE OPTIONS



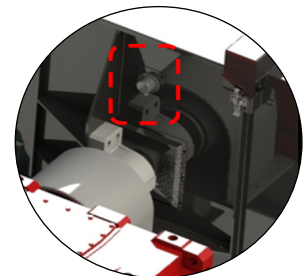
BLOCKED CHUTE SWITCH

Designed to produce a signal if the flow of material is interrupted.



ZERO SPEED SWITCH

Will sense under speed, over speed or zero speed conditions.

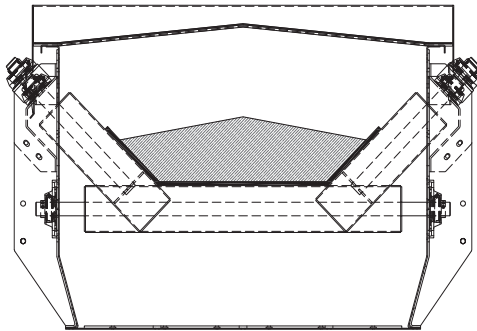


BELT ALIGNMENT SWITCH

Belt alignment switches are typically used in pairs with one switch on each side of the conveyor belt mounted near the first and/or last pulley of a conveyor.

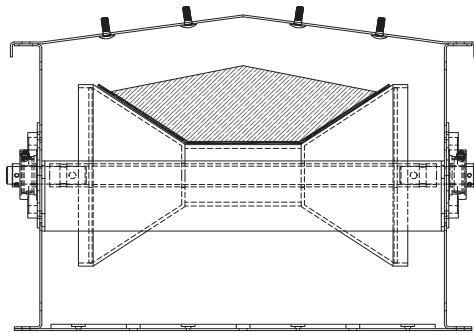
PRODUCT LINE

Belt Conveyors are a great choice for gentle handling of any commodity. Belt Conveyors are available in any length or capacity and require lower kilowatt per meter input than comparable chain conveyors.



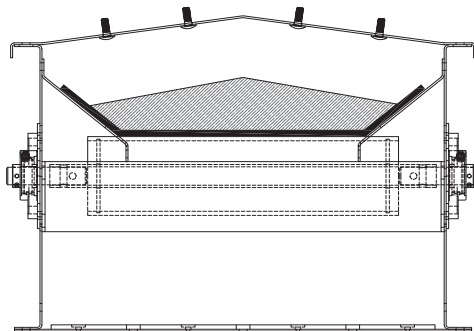
CCEB (CHIEF COMMERCIAL ENCLOSED BELT)

By utilizing 3 independent idlers, we are able to maximize the cross-sectional area for increased capacity and operate at a low speed. Each independent idler is easily removed from the outside of the conveyor frame for easy maintenance and replacement. Additionally, there are no brackets or bearings exposed to the internal atmosphere of the conveyor housing.



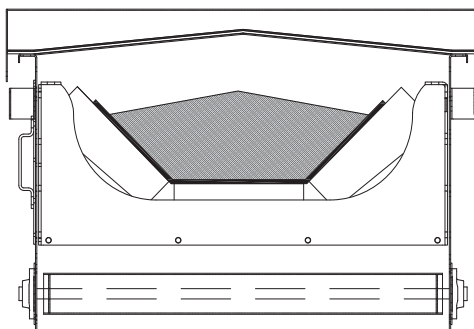
CSEB (CHIEF SPOOL ENCLOSED BELT)

The spool-shaped idler provides a troughed support for the conveyor belt. The spool idler uses two externally isolated bearings, providing easy access through the side of the conveyor. Routine maintenance can be conducted with no damage or need to cut the belt.



CAEB (CHIEF AGRICULTURAL ENCLOSED BELT)

When space is limited, the model CAEB is our lowest profile belt conveyor. This conveyor utilizes flat idlers for belt load support and UHMW lined side slides for belt edge support. The flat carry idlers have externally mounted bearings and the idler can be removed from the side of the conveyor frame.



CEEB (CHIEF EXTENDED ENCLOSED BELT)

By utilizing a combination of standard CEMA idlers and self-aligning idlers, this conveyor can easily transport any commodity up to 1km in distance. Each idler frame is easily removed from the outside of the conveyor frame for easy maintenance and replacement.